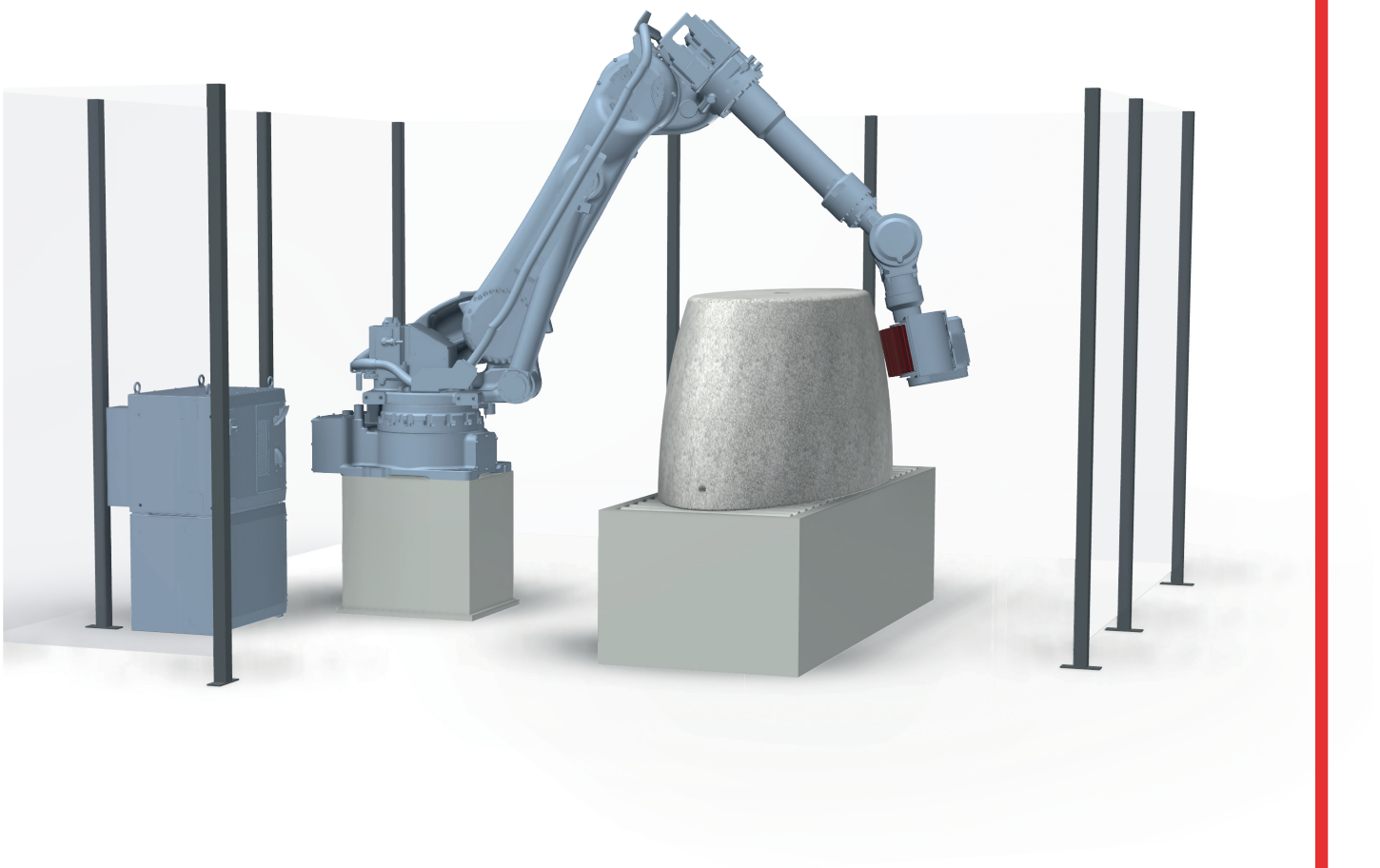


# AUTOMATED SANDING



**Eltronic**  
YOUR PRODUCTION PARTNER

# AUTOMATED SANDING

Automated sanding with a robot sander from Eltronic is a versatile solution, that gives the opportunity to automate and optimize time-consuming sanding processes for various parts. The automated process ensures a stable production. Production time is optimized but more importantly, time consumption is stable and output quality is uniform throughout the entire production time.

## How it works

### APPLICATION KEY COMPONENTS

#### Sanding tool

The robot is fitted with state-of-the-art sanding tool from Flex-trim. With this setup, the robot can reach the entire circumference of an object without any external axes. If an external exhaust ventilation is not available a stand-alone solution can be ordered as optional.

#### Robot

Medium or large 6-axis industrial robot mounted on a rigid powder coated steel frame.

#### Control system and operator interface

The modern robot controller handles the robot programs and all other functions in the application. A color touch panel is used for an intuitive HMI (Human Machine Interface) to control the application fast and simple.

#### Safety

To ensure absolute safety for any persons near the application, the robot and all equipment are surrounded by machine guarding made from powder coated steel mesh panels covers.

#### Programming

The robot comes with a base program that handles all basic functions of the application, such as moving to a homing position just with the push of a button. In general, the robot will be programmed so no special robot expertise is needed in the daily use of the application.

The application is delivered with minimum one object-model pre-programmed and tested at the customer.

Versatility

Flexibility

Consistency

Endurance

## Your direct advantages

### Uniformity

The quality of sanding with an automated process is more uniform compared to manual sanding and thus ensures a better basis for subsequent processes eg. painting, gluing etc.

### Increased productivity

Because the number of man-hours is lowered significantly compared to manual sanding, productivity is increased. The operator will have more time for other tasks in the production.

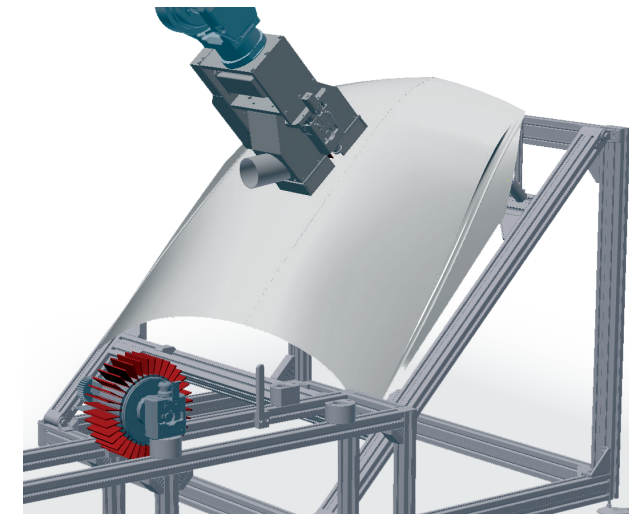
### Flexibility

Once the robot is programmed for a specific part, sanding different already programmed parts will be fast and easy. Switching between the different programs is easy and there is no need for training operators in how to sand an already programmed part.

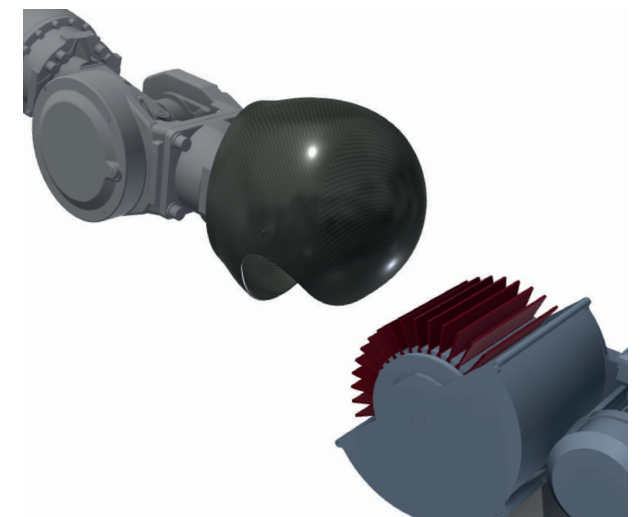
### Environment, health, safety

The robot sander improves all aspects of the working environment and guarantees a safer workplace without white fingers, static electricity etc. The improved and automated sanding procedure eliminates the repetitive work characterizing manual sanding. The robot cell operates at a low sound level, and an efficient dust suction system ensures a clean and safe working area.

**Eltronic**  
YOUR PRODUCTION PARTNER



Depending on the product size and application the automated robot can be configured carry the sanding tool and move it relative the stationary processing item, typically larger than 1 meter in any direction.



Depending on the product size and application the automated robot can be configured to carry the processing item and move it relative to one or more stationary sanding tools, typically smaller than 1 meter in any direction

## Technical specifications

General	Small model	Large Model
Total weight	1.000kg	1.500kg
Footprint (Approx)	3 x 3m	4 x 4m
Sanding volume LxWxH (Approx)	1500 x 600 x 600mm	2200 x 1000 x 1000mm
Machine guard	Powder coated steel mesh panels	

### Robot

Type	Motoman GP50	Motoman GP180
Payload	50kg	180kg
Controller	YRC1000	

### Sander

Type	Flextrim HWY
Diameter	Ø180-270mm
Length	100-400mm
Motor	1 x 0,55kW
Rpm	100-700rpm
Electrical supply	3 Phase 400V AC 50/60Hz

### Fixture

Support	Non-driven roller conveyor
Object fixing support	Vacuum plate

### Consumption

Electric power supply	3 Phase 400V AC 5kVA
Compressed air	120NL/min

## Interested?

Contact for more information

[sales@eltronic.dk](mailto:sales@eltronic.dk)

### About Eltronic A/S

Eltronic A/S is an ambitious engineering company with more than 20 years of experience developing production systems and automation. Our goal is to be our customer's preferred partner and to increase their global competitiveness and sustainability.

### Eltronic A/S

Kilde Allé 4

DK-8722 Hedensted

Tel. +45 76 74 01 01

[www.eltronic.dk](http://www.eltronic.dk)

[info@eltronic.dk](mailto:info@eltronic.dk)

## Optionals

### Features

- Mobile dust extraction unit
- Multiple robot programs
- Automatic infeed with driven roller conveyor
- Buffer on infeed side
- Buffer on outfeed side
- Automatic tool change
- DIAP Data Intelligence Analysis Platform